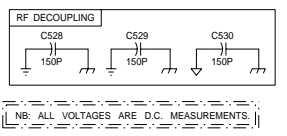
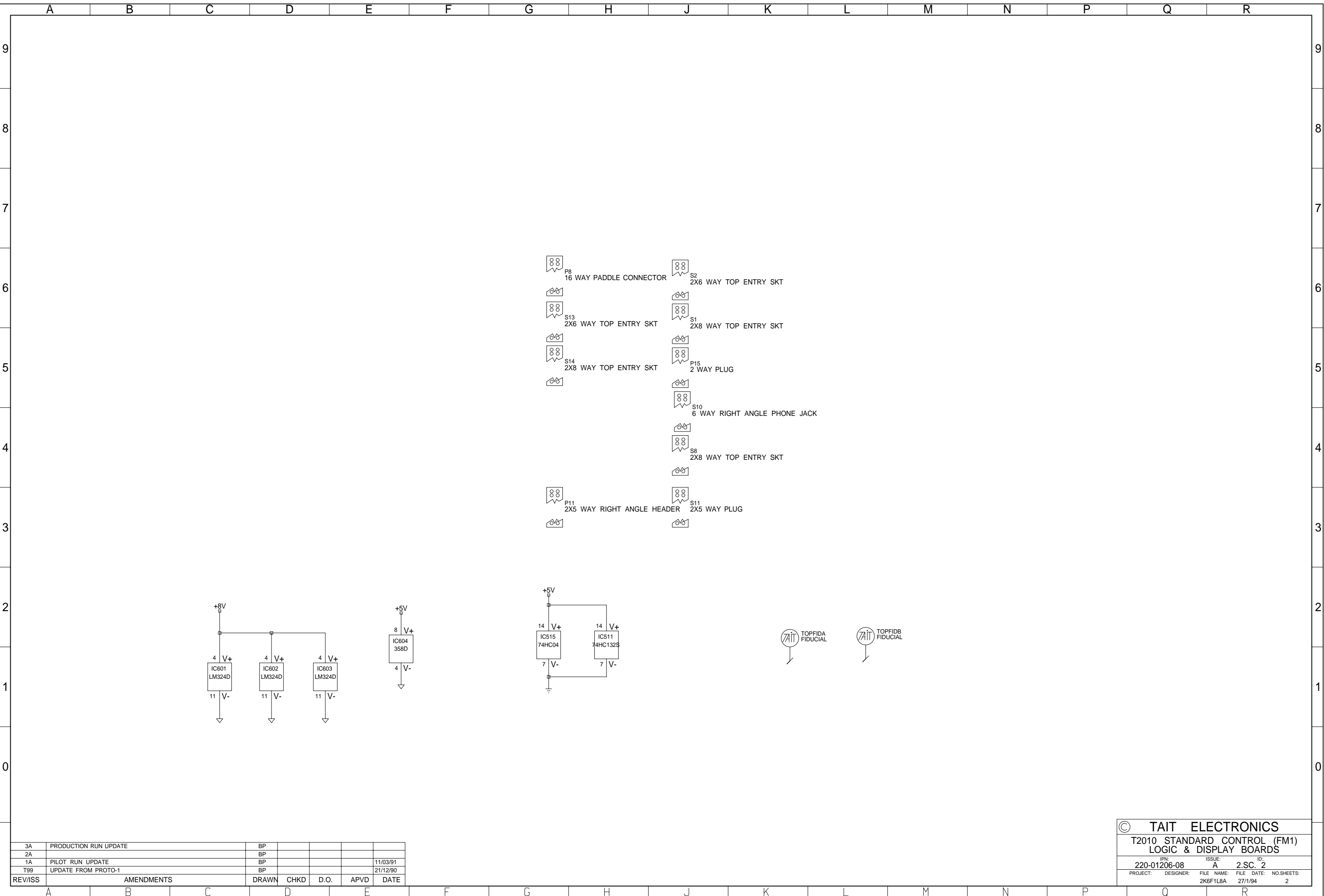


#SELCALL	#IC503	#X502	#R598	#R599
NONE	OS	OS	OS	OS
STANDARD	M1702/02	TE/35	OS	OS
ENHANCED	M1708	TE/35	OS	OS



8A	MODS TO ALLOW ENHANCED SELCALL	BPMIC
7A	ADDED IC505 LINKS FOR C3 TYPE SELCALL UNIT PTH.	BP & OTHERS J.F.
6B	FETCHED TO 405 CHANGED 47KVAR2 TO 47KVAR1 POTS	BP & OTHERS J.F.
6A	ADDED R583 & TP609	B.P. J.F.
REV/ISS	AMENDMENTS	DRAWN CHKD D.O. APV DATE

© TAIT ELECTRONICS
 T2010 STANDARD CONTROL (FM1)
 LOGIC & DISPLAY BOARDS
 220-01206-08 2 SC. 1
 PROJECT: DESIGNER: FILE NAME: FILE DATE: NO SHEETS: 2
 2K6F1LBA 27/1/94



3A	PRODUCTION RUN UPDATE	BP				
2A		BP				
1A	PILOT RUN UPDATE	BP				11/03/91
T99	UPDATE FROM PROTO-1	BP				21/12/90
REV/ISS	AMENDMENTS	DRAWN	CHKD	D.O.	APVD	DATE

© TAIT ELECTRONICS					
T2010 STANDARD CONTROL (FM1) LOGIC & DISPLAY BOARDS					
IPN:	DESIGNER:	FILE NAME:	FILE DATE:	ID:	NO. SHEETS:
220-01206-08	A	2K6F1L8A	27/1/94	2.S.C. 2	2

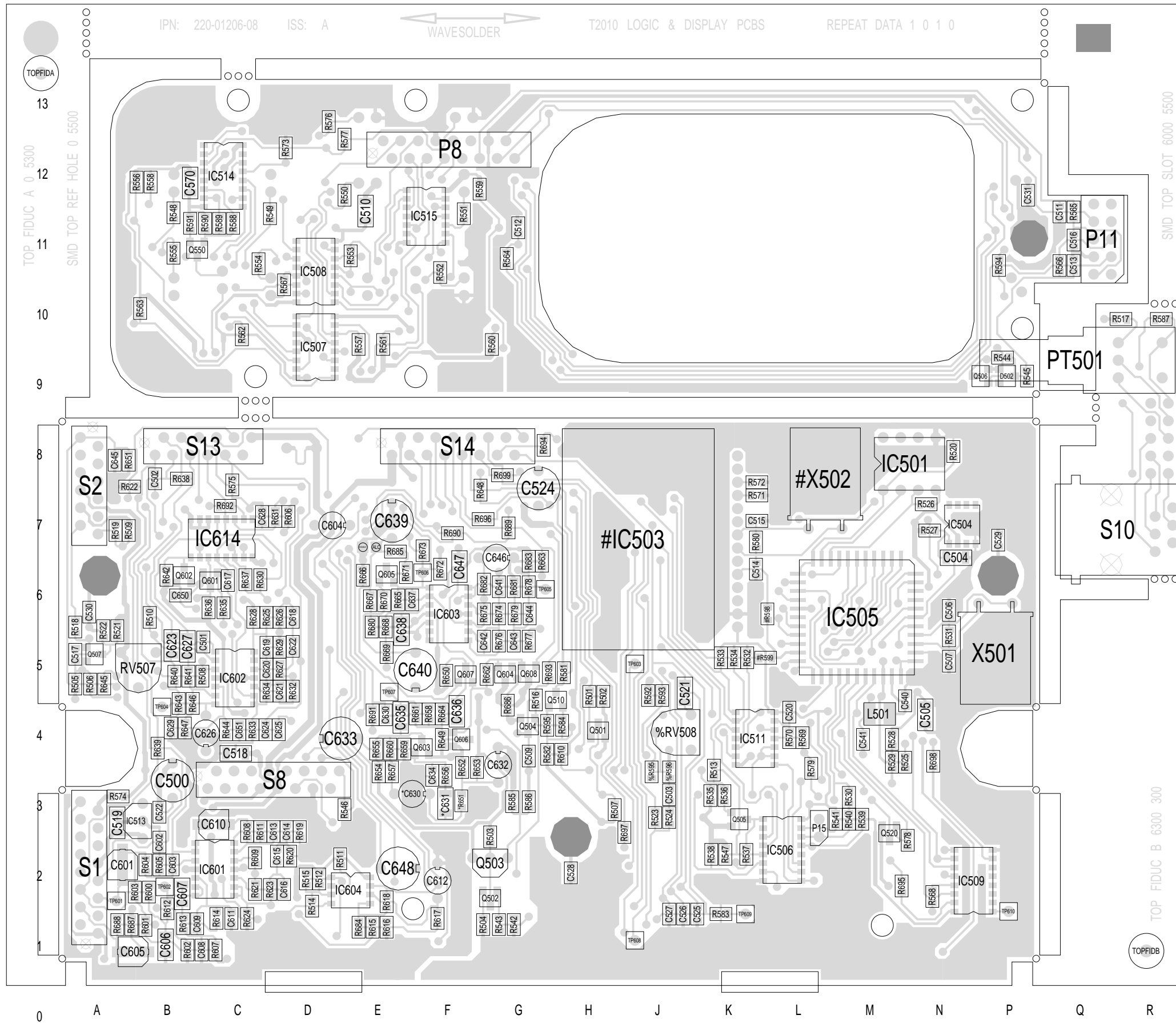
IPN: 220-01206-08

ISS: A

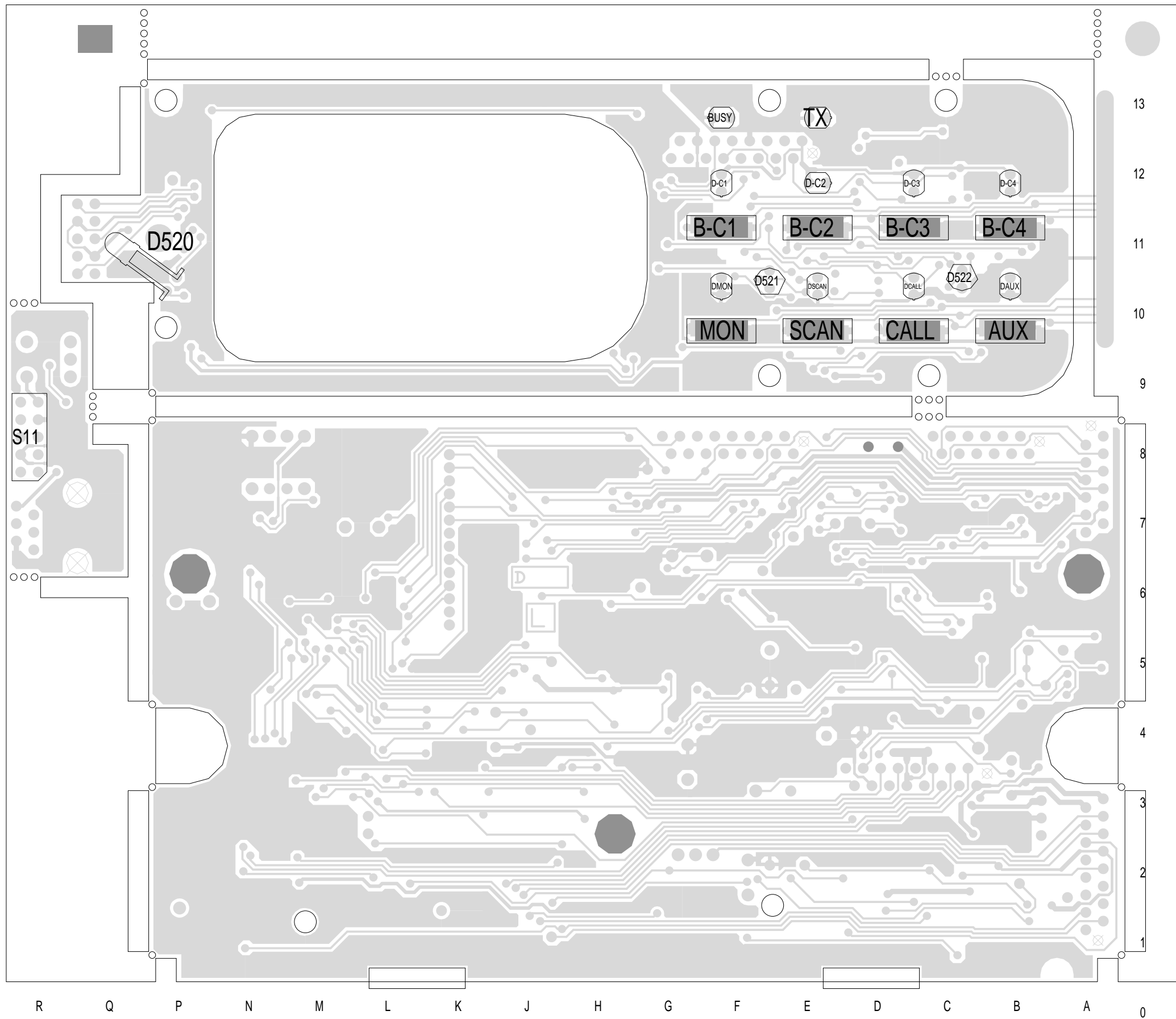


T2010 LOGIC & DISPLAY PCBs

REPEAT DATA 1 0 1 0



TAIT ELECTRONICS IPN: 220-01206-08 ISS: 8 ID: 1.TA DATE: 10 Sep 1998
 T2000 FM1 PCB LAYOUT - TOP SIDE



TAIT ELECTRONICS	IPN:	ISS:	ID:	DATE:
	220-01206-08	8	2.BA	10 Sep 1998
T2000 FM1 PCB LAYOUT - BOTTOM SIDE				